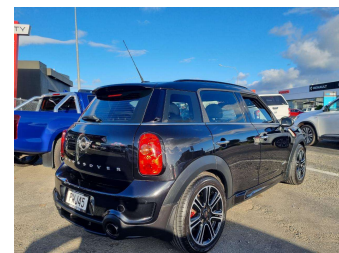
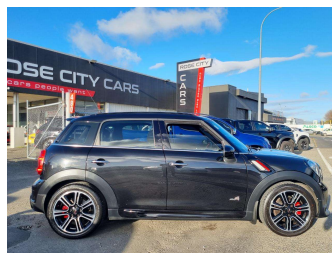



# 2016 BMW Mini JCW Crossover



**Purchase Price** **\$29,990**  
Includes GST, Registration & Licensing

Finance may be available on this vehicle. Ask one of our friendly staff for more information.



Gain peace of mind with Mechanical Breakdown Insurance. **Ask us how.**

**Top features**  
None Listed

Body Style  
**Hatch**

Odometer  
**97,984 km**

Engine  
**1590 cc**


Fuel Type  
**Petrol**

Transmission  
**Automatic**

Wheels  
-

VIN  
**WMWXD12050WS41634**

Interior  
-

Safety  
  
Based on 2023 VSRR rating

Reg No.  
**PWJ45**

Ext Colour  
**Black**

History  
**Ex-Overseas**

Seats  
**5 seats**

CO2 Emissions  
**★★★★☆**  
**212 grams/km**

Energy Economy  
**★★★★☆**  
**Annual fuel cost of \$3,570**  
**9.1L per 100km**

Cost per year is an estimate based on petrol price of \$2.80 per litre and an average distance of 14000 km. Emissions and Energy Economy figures standardised to 3P WLTP.

**Stock ID: 11990**



Rose City Cars | Email [bevan@rosecitycars.co.nz](mailto:bevan@rosecitycars.co.nz)  
480 Rangitikei Street, Palmerston North 4410, New Zealand

